

Inhalt

Seite

	Methodisch-didaktische Hinweise	3
1.	Term Starts	4 – 7
2.	A Day at High School	8 – 11
3.	Late for School	12 – 15
4.	The Eastbourne Project	16 – 19
5.	The Beach Party	20 – 23
6.	The Car Boot Sale	24 – 27
7.	End-of-year Open Day	28 – 31
8.	Eastbourne	32 – 35
9.	Lessons in the Open Air	36 – 39
10.	Family Day Out	40 – 43
11.	The Just So Stories	45 – 47
12.	Pevensey	48 – 51
13.	Ghosties and Ghoulies	52 – 55
14.	A Visit to a Pen Friend	56 – 59
	Lösungen	61 – 65



Methodisch-didaktische Hinweise

Die hier vorgestellten englischen Texte begleiten fünf Schulfreunde in den verschiedensten Situationen ihres täglichen Lebens.

Neben der sprachlichen wird auch die landeskundliche Kompetenz geschult, handeln doch alle Texte von der schönen Region rund um Eastbourne, einem Seebad am Ärmelkanal in der Grafschaft East Sussex in England mit weiteren Sehenswürdigkeiten und Besonderheiten.

Jedem der 14 Texte schließen sich mehrere Übungen an. Hier werden Wortschatz, Satzbau, Konzentration, Textinhalt, freies Schreiben, Tabellen auswerten, unregelmäßige Verben und weitere wichtige sprachliche Kompetenzen auf kurzweilige, abwechslungsreiche Form gefestigt.

Viel Spaß mit der Rundreise durch Sussex wünschen Ihnen das Redaktionsteam des Kohl-Verlages und

Barbara Hamblock



**netzwerk
lernen**

1. Term Starts

It's September and the start of the new term at Green Downs High School in Eastbourne. For many pupils, it's the first day at secondary school and they are standing in the school playground talking about the school and the teachers.

One of the boys is Mike Hall. He lives in Old Town, but his mother comes from Sri Lanka. Janet McCloud is talking Amy Kingston, a friend from primary school. Janet's family comes from Scotland, while Amy's parents are both from Eastbourne. Janet and Amy live in Hampden Park.

Two other children they know from primary school are Bridget O'Neal and Wasim Patel. Bridget's mother has a guesthouse near the pier where they live. Wasim's father has a newsagent's shop in Langney. The family lives in a flat above the shop. Wasim's grandfather came to Britain from India.

They are all wearing their new school uniforms – grey skirts for the girls and grey trousers for the boys. The girls have white blouses and the boys white shirts. The school blazer is blue. Sometimes they wear a dark blue pullover instead of their blazers.

The children are in Year 7. They are all in form 7B and the form teacher is Mr Waring. He is also their Maths teacher. They are happy that they are all in the same form. Mike's brother, Dave, is in Year 9. He says that Mr Waring is a good teacher.

Most of the children come to school by bus. School starts at nine in the morning and the pupils go home at half past three in the afternoon. They have lunch at school in the school dining room at one o'clock in the afternoon.

This is their first day at secondary school, so they do not have any homework and the pupils can go home and tell their families about the new school. Before they go to bed, they write a school timetable and put everything they need for the next day into their school bags.



1. Term Starts

Exercise 1

True or false. Correct the incorrect sentences.

1. Green Downs High School is in Brighton.

2. The new term starts in December.

3. Mike Hall lives in Old Town.

4. Janet's family comes from Wales.

5. Mrs O'Neal's guest house is in Old Town.

6. The pupils are wearing school uniforms.

7. Wasim is in Year 7.

8. Mr Waring is not a good teacher.

9. School starts at eight in the morning.

10. The pupils come to school by taxi.

1. Term Starts

Exercise 2

Answer the following questions about the text in complete sentences.

1. What is the name of the school in Eastbourne?

2. Does the new term start in November?

3. Where are the pupils?

4. What are the names of the children?

5. How many boys are there? How many girls are there?

6. Is Mike's mother English?

7. Are the children in Year 9?

8. Is Mike's brother in Year 8?

9. Is Mr Waring the children's French teacher?

10. When do they write a school timetable?

1. Term Starts

Exercise 3

Find the ten things you can put in your school bags.

P	X	M	J	Q	M	S	F	S	U	R	D	H	H	E
E	L	H	D	D	E	W	P	K	Y	M	J	Q	E	F
N	C	K	O	V	O	E	A	K	H	K	L	O	V	U
C	A	C	P	O	L	E	C	U	K	R	L	Q	Q	E
I	L	B	E	B	X	T	B	W	V	H	F	V	N	X
L	C	U	N	R	G	S	E	Q	G	Y	E	R	I	E
C	U	S	C	D	M	W	M	O	N	E	Y	U	N	R
A	L	T	R	J	A	D	M	E	P	C	K	L	G	C
S	A	I	A	I	G	X	N	R	N	U	F	E	X	I
E	T	C	Y	K	N	G	S	L	T	P	E	R	N	S
N	O	K	O	N	I	W	Z	D	C	E	H	N	A	E
K	R	E	N	S	Q	A	N	F	I	L	G	J	W	B
P	Z	T	S	W	G	O	D	F	T	Q	D	R	F	O
V	J	A	D	Y	P	G	O	U	P	K	R	K	L	O
C	P	R	U	B	B	E	R	K	X	Y	S	B	B	K

Exercise 4

Tell the time.

I go to school at _____



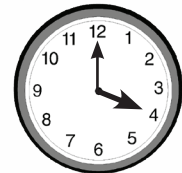
School starts at _____



School ends at _____



I go home at _____



They have lunch at _____



I go to bed at _____



8. Eastbourne

Eastbourne is one of the most beautiful seaside resorts on the south coast of England. It is in East Sussex and has a population of approximately 99,500. Many people move to Eastbourne when they are over 60 years old and stop working.

You can find Beachy Head to the west of the town. It is the highest chalk cliff in Great Britain and part of the South Downs. The Downs are low chalk hills. The area around Beachy Head was used as a backdrop for some scenes in the fourth Harry Potter film.

Quite near Beachy Head you can see a grey lighthouse that had been used until 1902. It was moved further inland in 1999 because the cliffs were crumbling. A lot of coastal land has already fallen into the sea because of erosion. Today the Belle Tout lighthouse is a cosy café and a comfortable bed & breakfast.

Like many seaside resorts Eastbourne has an interesting old pier. If you walk along the seafront from Beachy Head, you come to the pier. It was opened in 1870 and is one of the few remaining Victorian piers in Great Britain. You can go to an amusement arcade, cafés and a disco there. Part of the pier was destroyed by a terrible fire in July 2014.

Before you reach the pier, you see the big Eastbourne bandstand on your right. It is one of the busiest bandstands in the UK, where concerts for people of all ages take place.

If you carry on to the far end of the promenade, past the Redoubt Fortress, you come to Princes Park and the Sovereign Harbour. In the park, you can go boating on the lake. Have you ever tried tub-boating? If you prefer it, you can visit the small Fort Fun theme park. The Sovereign Harbour is one of Europe's largest man-made marinas and offers many restaurants, cafés and boutiques.



8. Eastbourne

Exercise 1

Correct the false statements.

1. Eastbourne is not on the coast.

2. Many old people move to Eastbourne.

3. You have to go up to go on the Downs.

4. Beachy Head was used as a backdrop for one of the Twilight films.

5. The Belle Tout lighthouse was moved in 1902.

6. You can sleep in the Belle Tout lighthouse.

7. The Eastbourne pier is Edwardian.

8. A terrible storm destroyed parts of the pier in 2014.

9. Young children can go to concerts at the Bandstand.

10. The Sovereign Harbour is next to Beachy Head.

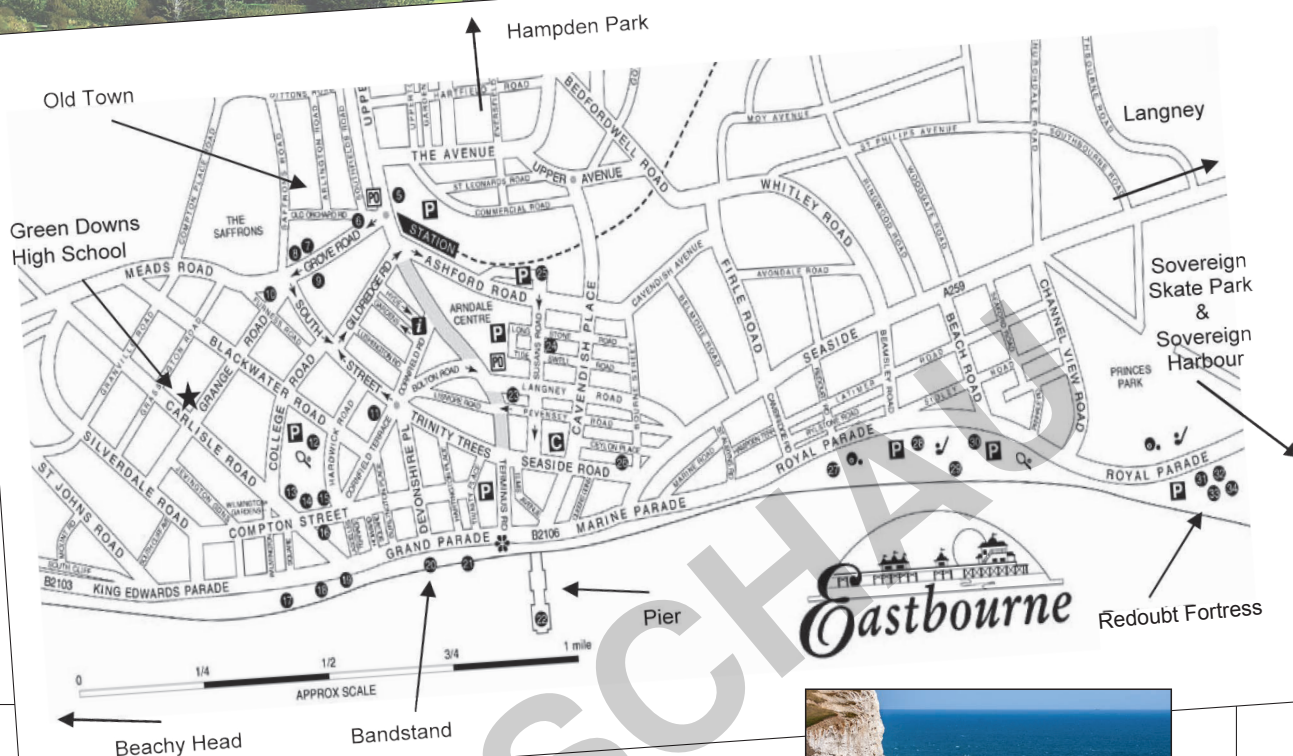
11. You can go swimming in the lake in Princes Park.

12. Sovereign Harbour is a good place to go shopping.

8. Eastbourne

Exercise 2

Here is a map of Eastbourne's town centre. Using the map, answer the following questions. Write in your exercise book.



1. On which street is the station?
2. How many car parks are there on the map?
3. Is Hampden Park in the centre of Eastbourne?
4. Where is Green Downs High School?
5. If you are looking at the pier and the sea, which way do you walk to Beachy Head?
6. Tell a pupil from Green Downs High School how to get to the Arndale Centre.
7. Where is the Bandstand?
8. Where can you go skateboarding?
9. How do you get to Beachy Head from the Redoubt Fortress?
10. Is Old Town near the pier?
11. Is the boating lake in Hampden Park?
12. Is Silverdale Road near Princes Park?

8. Eastbourne

Exercise 3

Fill in the other forms of the following words.

Example: long – longer – the longest

1. _____ – more beautiful – _____
2. high – _____ – _____
3. _____ – _____ – the lowest
4. grey – _____ – _____
5. _____ – cosier – _____
6. comfortable – _____ – _____
7. _____ – _____ – the busiest
8. far – _____ – _____
9. _____ – smaller – _____
10. large – _____ – _____
11. _____ – more interesting – _____
12. _____ – _____ – the oldest
13. terrible – _____ – _____
14. big – _____ – _____



Exercise 4

Write about the town where you live on a separate piece of paper. You can use the following words to help you.

population

station

church

shopping centre

theatre

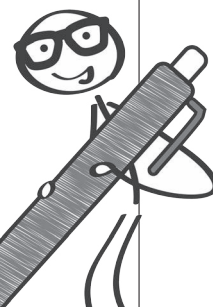
town hall

park

cafés

hotel

river



Lösungen

1. Term Starts

Exercise 1

- False, Green Downs High School is in Eastbourne.
- False, the new term starts in September.
- False, Janet's family comes from Scotland.
- False, Mrs O'Neal's guesthouse is near the pier.
- False, Mr Waring is a good teacher.
- False, school starts at nine in the morning.
- False, the pupils come to school by bus.

Exercise 2

- The school is called Green Downs High School.
- No, the new term starts in September.
- The pupils are in the school playground.
- The children's names are Mike, Janet, Amy, Bridget and Wasim. There are two boys. There are three girls.
- Mike's mother isn't English. She is from Sri Lanka.
- No, the children are in in Year 7.
- No, Mike's brother is in Year 9.
- No, Mr Waring is their Maths teacher.
- They can write their school timetable before they go to bed.

Exercise 3

bus ticket, calculator, crayons, exercise book, money, pen, pencil case, rubber, ruler, sweets

P	X	M	J	Q	M	S	F	S	U	R	D	H	H	E
E	L	H	D	D	E	W	P	K	Y	M	J	Q	E	F
N	C	K	O	V	O	E	A	K	H	K	L	O	V	U
C	A	C	P	O	L	E	C	U	K	R	L	Q	Q	E
I	L	B	E	B	X	T	B	W	V	H	F	V	N	X
L	C	U	N	R	G	S	E	Q	G	Y	E	R	I	E
C	U	S	C	D	M	W	M	O	N	E	Y	U	N	R
A	L	T	R	J	A	D	M	E	P	C	K	L	G	C
S	A	I	A	I	G	X	N	R	N	U	F	E	X	I
E	T	C	Y	K	N	G	S	L	T	P	E	R	N	S
N	O	K	O	N	I	W	Z	D	C	E	H	N	A	E
K	R	E	N	S	Q	A	N	F	I	L	G	J	W	B
P	Z	T	S	W	G	O	D	F	T	Q	D	R	F	O
V	J	A	D	Y	P	G	O	U	P	K	R	K	L	O
C	P	R	U	B	B	E	R	K	X	Y	S	B	B	K

Exercise 4

I go to school at 8.30 a.m. School starts at 9 a.m.
Lunch is at 1 p.m. School ends at 3.30 p.m.
I go home at 4 p.m. I go to bed at 9.30 p.m.

2. A Day at High School

Exercise 1

- Dave is telling Mike all about Green Downs High School because Mike is a new pupil at the school.
- No, they have free bus tickets.
- They go to their form room for registration.
- They get detention if they are late.
- They have assembly on Tuesdays and Fridays.
- The head teacher talks about problems of behaviour, uniform, school trips, etc.
- They go to the canteen for lunch. It is self-service.
- You can join the choir.

Exercise 2

- No, he doesn't go to school on Saturdays.
- Mr Waring is the form teacher.
- The head teacher takes assembly.
- School starts at 9 a.m. and ends at 3.30 p.m.
- The morning break is twenty minutes long. The lunch break is fifty minutes long.
- They have five Maths lessons a week.
- Mrs Dunn is the English teacher.
- Yes, they have a double lesson of PE.
- There are eleven subjects on the timetable.
- Mr Waring teaches two subjects – Maths and IT
- Mr Berry teaches the class at 12:10 on Thursdays. He teaches Geography.
- There are two teachers for Science – Mr Holmes and Mr Sykes
- Mr Holmes teaches Science on Mondays, Wednesdays and Fridays
- The German word for IT is Informatik
- The pupils have Art on Mondays and Thursdays.

3. Late for School

Exercise 1

- It is Tuesday.
- Mike, Wasim and Amy are waiting for the bus.
- Nessie is the name of Janet's dog.
- The bus arrives after twenty minutes.
- No, Mike's watch shows twenty past nine.
- No, there is a picture of the Eiffel Tower on the door.
- Mme Creusot is their French teacher.
- Bridget can walk to school
- Yes, they are frightened of Mme Creusot.
- Janet sits next to Bridget.
- Mme Creusot tells them what their homework is.
- No, they can't find the right room for the next lesson.

Lösungen

Exercise 2

On **Tuesday** morning, the children arrive at school **late**. The first lesson is **French** and the teacher is **Mme Creusot**. The pupils **cannot** find the French room. There is a picture of the **Eiffel Tower** on the door. The clock on the wall shows half past **nine**. Amy is very **worried** and starts to cry. There is **nobody** sitting next to Bridget. Mike **tries** to explain the situation to Mme Creusot. The next lesson is **Geography**.

Exercise 4

1. You can wear a watch on your arm. A clock hangs on the wall.
2. A West Highland White Terrier is a small dog. A German Shepherd Dog is a big dog.
3. Children do homework for school. Parents do housework at home.
4. The Eiffel Tower is in Paris. The Brandenburg Gate is in Berlin.
5. A corridor is very long and a room is usually square.

Exercise 5

1. little – big; 2. late – early; 3. first last; 4. strict – friendly; 5. down – up; 6. walk – run; 7. can – can't;
8. happy – sad; 9. cry – laugh; 10. end – begin/start; 11. sit down – stand up; 12. right – wrong

4. The Eastbourne Project

Exercise 1

1. False, Mrs Evans, the Geography teacher, asks them to make a map of Eastbourne.
2. False, the children collect brochures from the tourist information centre.
3. False, Mike shares a room with his brother.
4. False, Mike's room is very untidy.
8. False, the bathroom is sparkling clean.
9. False, Nessie likes playing games.

Exercise 2

1. The children are trying to find a room to work in, because they are doing a project together.
2. No, they can't. It is too untidy.
3. She's in the kitchen and she's making dinner.
4. They go to Mike's house, but his room is too untidy to work in. They go to Wasim's house, but they can't go in because his auntie is cooking in the kitchen. They go to Bridget's house, but her mother has cleaned the bathroom and they can't go to Bridget's room.
5. They don't go to Janet's house because Nessie likes playing with the children.
6. They children walk all over the town and see most of the tourist sights.

Exercise 3

Kitchen: chair, cooker, cupboard, curtains, refrigerator, sink, table
Bathroom: bath, bathroom cabinet, curtains, mirror, shower, toilet, washbasin
Bedroom: bed bookshelves, carpet, chair, chest of drawers, curtains, mirror, wardrobe
Living room: armchair, bookshelves, carpet, coffee table, couch, curtains, fireplace, mirror

5. The Beach Party

Exercise 1

1. Janet isn't late for school because it's Saturday.
2. Janet's birthday is on June 8th and my birthday is on ...
3. It is important for Janet to have good weather because she's having a beach party.
4. Nessie waits outside the supermarket.
5. There are sandwiches with egg, tomato or chicken, sausage rolls, potato crisps, biscuits and cans of coke and lemonade in the picnic basket. The birthday cake has candles and pink icing on it.
6. The tide is out. It's a pebble beach.
7. Nessie guards the picnic basket.
8. They splash and chase each other.
9. She is sitting on a blanket and looking very pleased.
10. Janet has a good birthday.

Exercise 2

Across: 2: tide; 3: picnic; 5: invite; 7: guesthouse; 9: promenade; 10: birthday; 11: calendar
Down: 1: pebbles; 4: candles; 6: supermarket; 8: can; 11: crisps

Exercise 3

1. calendar – calendars; 2. party – parties; 3. pier – piers; 4. child – children; 5. weather – weather;
6. picnic – picnics; 7. bus – buses; 8. sandwich – sandwiches; 9. tomato – tomatoes; 10. fun – fun;
11. guesthouse – guesthouses (hier darauf achten, dass das ‚e‘ bei ‚houses‘ ausgesprochen wird); 12. potato – potatoes

6. The Car Boot Sale

Exercise 1

1. It is a place where people take all the things they no longer want and try to sell them.
2. No, it is free for them.
3. A numismatist is someone who collects coins.
4. Wasim is looking for a Japanese coin.
5. Mike's mother is selling things at the car boot sale.
6. Dave is lucky because he finds a book he needs for school and it only costs 10p.
7. Mike looks for a French book because he likes the French teacher and is interested in the French language.
8. Nessie sniffs at the garden chairs, benches etc.
9. Wasim doesn't want to go with the group because he can't find anything for his collection.
10. Wasim goes with the group because Janet finds an American coin in the grass he doesn't have in his collection.

Exercise 2

1. a collector = a person who buys or finds things of a certain type and keeps them as a hobby; 2. a car boot = you put luggage and other things into this part of the car; 3. knick-knacks = small, ornamental objects;
4. junk = things people don't use anymore or throw away; 5. a bench = a seat; 6. a guesthouse = a small hotel; 7. a bench = a container for flowers; 9. a coin = a round piece of metal