

● Freiarbeit Fix & Fertig

● Subtraktion ab Klasse 1

● Autor: Sin-U Ko

## Löwe, Nashorn oder Nilpferd?

gelb 6

lila 7

blau 5

grün 4

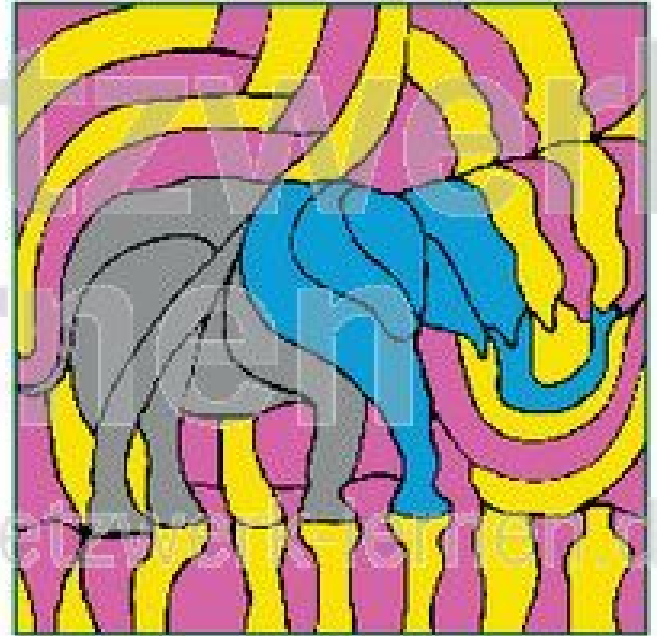
10-6, 7-2, 10-5, 7-2, 4-0, 5-1, 7-3, 8-4, 8-4, 8-4, 8-3, 9-4, 5-1, 5-0, 8-3, 9-5, 4-0, 6-1, 7-3, 8-3, 5-1, 9-4, 10-4, 7-1, 9-2, 7-1, 8-1, 10-4, 5-1, 7-0, 10-3, 10-3, 9-3, 7-3, 6-1, 6-2, 6-1, 8-2, 9-5, 9-4, 8-3, 8-3, 9-4, 7-3, 10-5, 4-0, 7-2, 10-5, 9-4, 10-6, 7-2, 10-6, 8-3, 7-3, 5-1, 7-2, 10-6

www.netzwerk-lernen.de

● Tiere aus Afrika



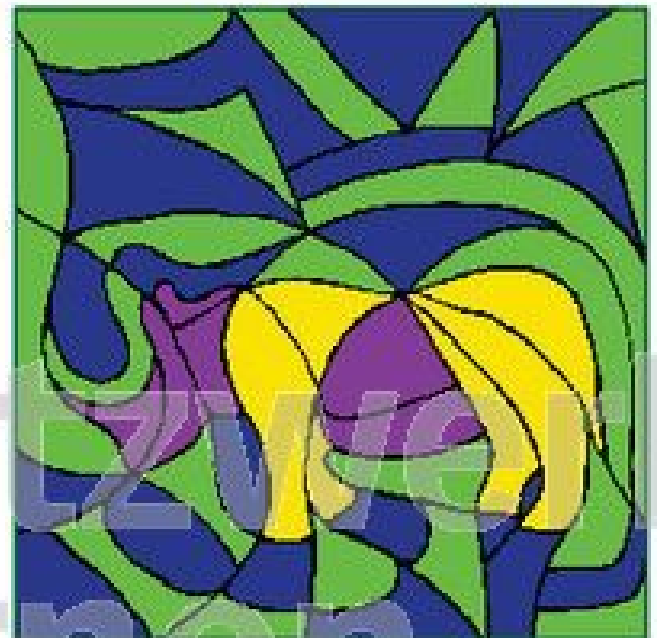
Giraffe A1



Elefant A2



Affe A3



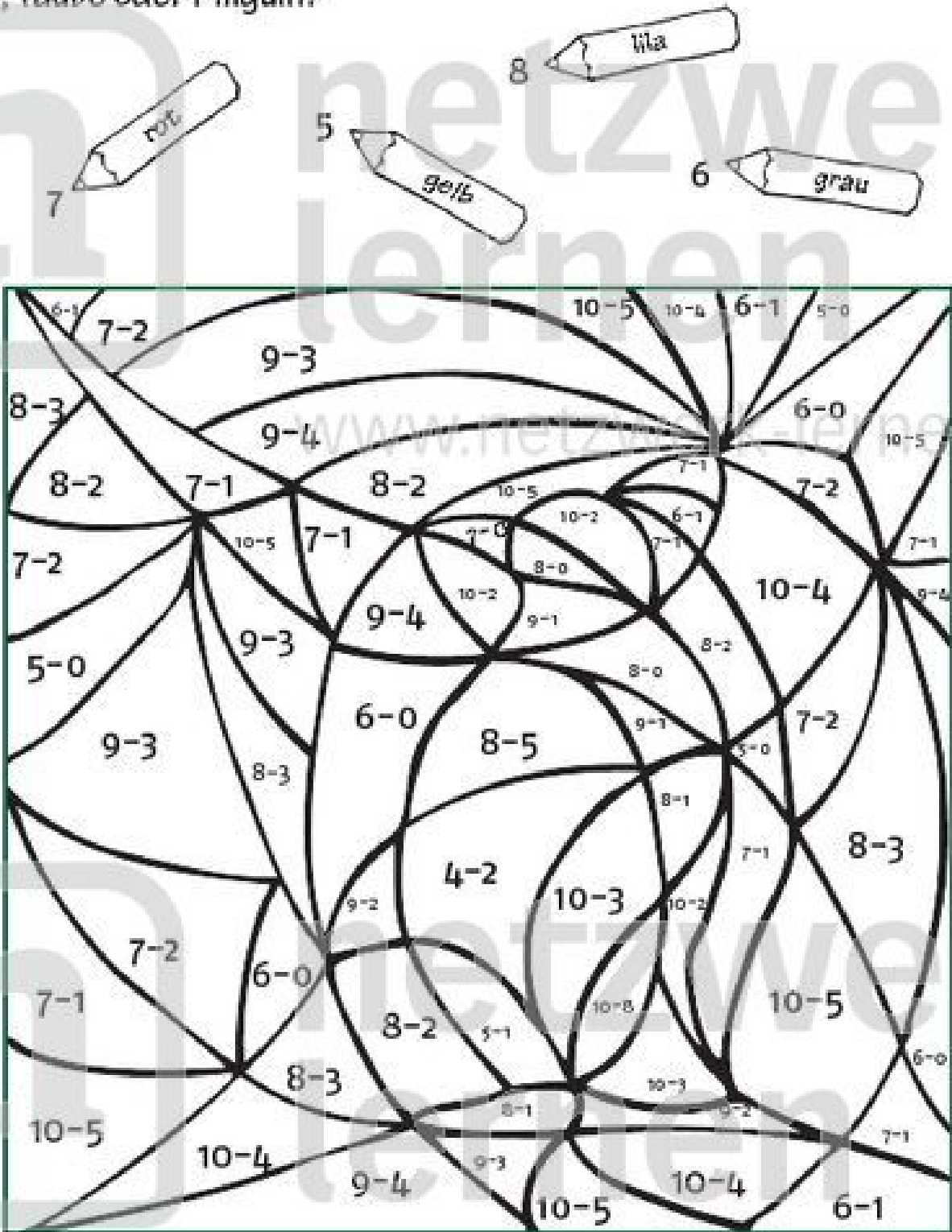
Nashorn A4

● Freiarbeit Fix & Fertig

● Subtraktion ab Klasse 1

● Autor: Sin-U Ko

Adler, Taube oder Pinguin?



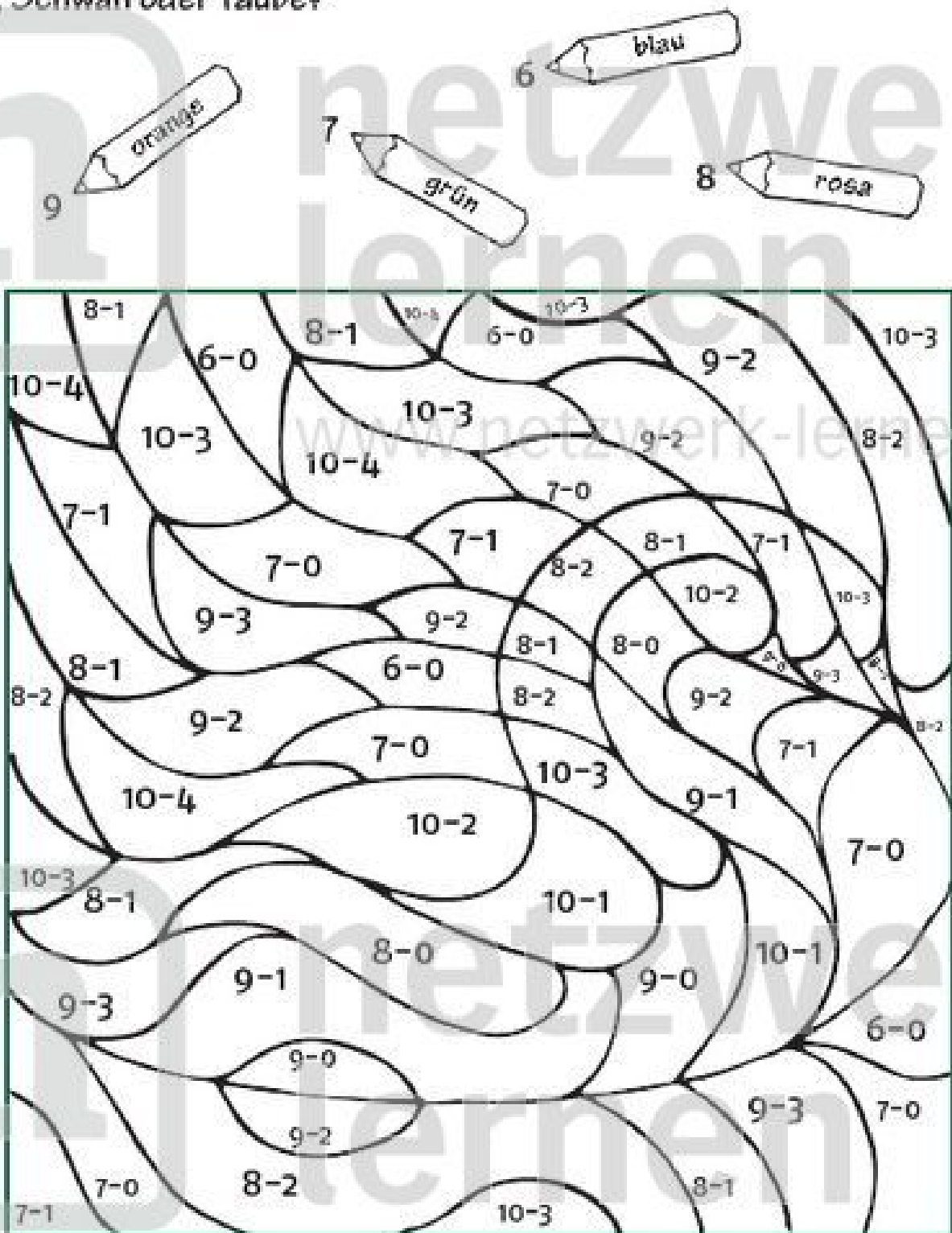
www.netzwerk-lernen.de

● Freiarbeit Fix & Fertig

● Subtraktion ab Klasse 1

● Autor: Sin-U Ko

Ente, Schwan oder Taube?



www.netzwerk-lernen.de

Lehrer